

OPN1MW Antibody (N-term)
Affinity Purified Rabbit Polyclonal Antibody (Pab)
Catalog # AP4917a

Specification

OPN1MW Antibody (N-term) - Product Information

Application	FC, WB,E
Primary Accession	P04001
Other Accession	O12948 , P04000 , P22329 , O35476 , P0DN77 , P0DN78
Reactivity	Human
Predicted	Rat, Chicken, Xenopus
Host	Rabbit
Clonality	Polyclonal
Isotype	Rabbit IgG
Calculated MW	40584
Antigen Region	21-50

OPN1MW Antibody (N-term) - Additional Information

Gene ID 101060233;2652

Other Names

Medium-wave-sensitive opsin 1, Green cone photoreceptor pigment, Green-sensitive opsin, GOP, OPN1MW, GCP

Target/Specificity

This OPN1MW antibody is generated from rabbits immunized with a KLH conjugated synthetic peptide between 21-50 amino acids from the N-terminal region of human OPN1MW.

Dilution

FC~~1:10~50

WB~~1:1000

E~~Use at an assay dependent concentration.

Format

Purified polyclonal antibody supplied in PBS with 0.09% (W/V) sodium azide. This antibody is purified through a protein A column, followed by peptide affinity purification.

Storage

Maintain refrigerated at 2-8°C for up to 2 weeks. For long term storage store at -20°C in small aliquots to prevent freeze-thaw cycles.

Precautions

OPN1MW Antibody (N-term) is for research use only and not for use in diagnostic or therapeutic procedures.

OPN1MW Antibody (N-term) - Protein Information

Name OPN1MW ([HGNC:4206](#))

Synonyms GCP

Function Visual pigments are the light-absorbing molecules that mediate vision. They consist of an apoprotein, opsin, covalently linked to cis-retinal.

Cellular Location

Cell membrane; Multi-pass membrane protein

Tissue Location

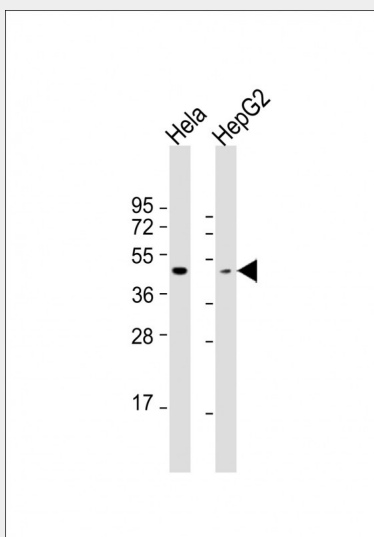
The three color pigments are found in the cone photoreceptor cells.

OPN1MW Antibody (N-term) - Protocols

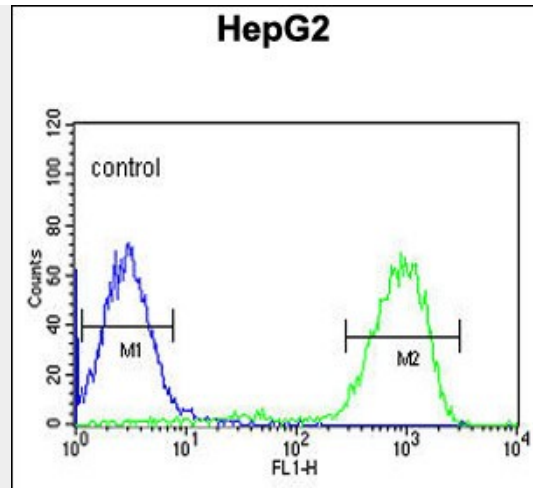
Provided below are standard protocols that you may find useful for product applications.

- [Western Blot](#)
- [Blocking Peptides](#)
- [Dot Blot](#)
- [Immunohistochemistry](#)
- [Immunofluorescence](#)
- [Immunoprecipitation](#)
- [Flow Cytometry](#)
- [Cell Culture](#)

OPN1MW Antibody (N-term) - Images



All lanes : Anti-OPN1MW Antibody (N-term) at 1:1000 dilution Lane 1: HeLa whole cell lysate Lane 2: HepG2 whole cell lysate Lysates/proteins at 20 µg per lane. Secondary Goat Anti-Rabbit IgG, (H+L), Peroxidase conjugated at 1/10000 dilution. Predicted band size : 41 kDa Blocking/Dilution buffer: 5% NFDM/TBST.



OPN1MW Antibody (N-term) (Cat. #AP4917a) flow cytometric analysis of HepG2 K10cells (right histogram) compared to a negative control cell (left histogram). FITC-conjugated goat-anti-rabbit secondary antibodies were used for the analysis.

OPN1MW Antibody (N-term) - Background

OPN1MW encodes for a light absorbing visual pigment of the opsin gene family. The encoded protein is called green cone photopigment or medium-wavelength sensitive opsin. Opsins are G-protein coupled receptors with seven transmembrane domains, an N-terminal extracellular domain, and a C-terminal cytoplasmic domain. The long-wavelength opsin gene and multiple copies of the medium-wavelength opsin gene are tandemly arrayed on the X chromosome and frequent unequal recombination and gene conversion may occur between these sequences. X chromosomes may have fusions of the medium- and long-wavelength opsin genes or may have more than one copy of these genes. Defects in this gene are the cause of deutanopic colorblindness.

OPN1MW Antibody (N-term) - References

Thirumuruganandham, S.P., et al. J Mol Model 15(8):959-969(2009)
Ala-Laurila, P., et al. J. Biol. Chem. 284(24):16492-16500(2009)
Holmes, M.V., et al. PLoS ONE 4 (12), E7960 (2009)